



Lake Wylie Marine Commission
Clean Marina Initiative

Vernon Peers
Vice Chairman
6-16-09

LWMC - Who Are We?



- The Lake Wylie Marine Commission was established in 1987 through an action of the U.S. Congress and joint actions of the North and South Carolina General Assemblies and Gaston and Mecklenburg Counties in North Carolina and York County in South Carolina.
- The Commission's authority includes all matters relating to or affecting the use of Lake Wylie and its shoreline area within all three counties to 1,000 feet from the full pond level of 575 feet.
- The Commission has seven members with two members each appointed by the Gaston and Mecklenburg Board of Commissioners and the York County Council. Each county provides equal funding for the Commission's work. Counties rotate the appointment of a third commissioner from that county.

LWMC Activities

- The Commission's goals and activities focus on matters relating to or affecting the use of Lake Wylie and its shore line with particular emphasis on three strategic areas:
 - *preserving and protecting the lake's water quality and its shoreline,*
 - *promoting public safety and public education,*
 - *and protecting wildlife and the natural environmental.*
- Commissioners develop special initiatives as needed such as invasive plant management and the Clean Marina Initiative.



Lake Water Quality

- **Catawba River named most endangered river system in the U.S. in 2008.**
- Sources of Lake Pollution
 - Point source pollution – from a discrete point of discharge (Treatment Plants, Industrial sites, etc.)
 - Non-Point Source Pollution – from diffuse sources (Rain run-off, agricultural chemicals and wastes, logging, paved areas, mining, etc.)
- According to the EPA, Non-Point Source Pollution is the leading cause of water quality impairment in the U.S.
- The congregation of recreational boating activities at marinas and all the various activities associated with fueling and maintaining them can result in significant impact to water quality.
 - Petroleum hydrocarbons from fuel, oil drippings, and solvents
 - Nutrients and pathogens from sewage discharge and pet waste
 - Toxic metals from anti-foulants and boat maintenance debris
 - Liquid and solid waste from engine and hull maintenance
 - Sediments from parking lot run-off and shoreline erosion



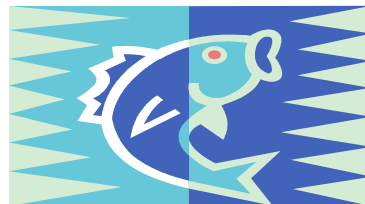
What is the LWMC Clean Marina Program?

- The goal of the **LWMC Clean Marina** Initiative is to protect and improve the lake's water quality.
- The LWMC program is totally voluntary at this time and is modeled after other Clean Marina Initiatives active both on coastal and inland waters in several other states.
- The program is designed to be specific to Lake Wylie but will include many of the policies and practices necessary to become an official South Carolina or North Carolina Clean Marina.
- The program will allow participating and certified marinas to receive recognition for promoting a cleaner marine environment for Lake Wylie.
- Certified marinas will be authorized to fly the **LWMC Clean Marina** flag and to use the **LWMC Clean Marina** logo in their advertising.
- Certified Marinas will receive publicity from the LWMC on its website and in the form of press releases and special mention in publicity opportunities.



Why Be A Clean Marina?

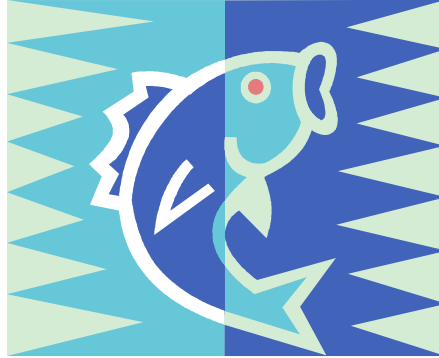
- Recognizes you for making a commitment to do your part to protect Lake Wylie's water quality.
- May ensure that your facility is in compliance with environmental regulations.
- Encourages environmentally responsible boaters to use your marina. ([Card](#))
- Provides guidelines to help train your staff and patrons.
- May make your marina more aesthetically attractive by reducing odors and visual impairments.
- Gains publicity from the LWMC and by use of logo on facility, letterhead, advertising, etc.
- Can make you eligible for cost sharing programs(ie. [Clean Vessel Act](#)).
- Promotes your facility as being eco-friendly.



How to Become Certified

- Checklist for Self Evaluation – marinas will be provided with a [checklist](#) of criteria for the LWMC program, including:
 - Sewage Handling
 - Boat Maintenance Activities
 - Solid Waste Management
 - Safety and Emergency Planning
 - Oil and Other Hazardous Waste Handling
- Various guidebooks are available on the I-net to help with Best Management Practices (BMP's) to gain compliance with the activities.
 - South Carolina Clean Marina Program – www.scdhec.net/environment/ocrm/outreach/clean_marina.htm
 - North Carolina Clean Marina Program – www.dcm2.enr.state.nc.us/marinas/clean.htm
 - Tennessee Valley Authority Clean Marina Program – www.tva.gov/environment/water/boating.htm
- Once 80% of the checklist items are met, the Clean Marina application is submitted to the LWMC that will arrange for a site visit and inspection. Upon approval, the marina will be certified.
- Marinas that do not meet the criteria can learn about needed improvements and can submit an application after necessary changes are made.





QUESTIONS?

**Vernon Peers
LWMC Clean Marina Program
24 Sunrise Point Road
Lake Wylie, SC 29710**

scpeers@comporium.net 704-641-1165

or

Annette Lawing, LWMC Clerk

alawing@centralina.org 704- 348-2736